

## TEST REPORT

No. : XMIN190902341CCM

Date : Oct.14, 2019

Page: 1 of 10

CUSTOMER NAME: A. BERGER GMBH  
ADDRESS: WEYERHOFSTRAÙE 68/E49, 47803 KREFELD, GERMANY

Sample Name : 4384-6266-RECY BE.TEX® GREEN SAMBA FR  
Product Specification : 200 g/m<sup>2</sup>  
0.23 mm thickness  
white

Buyer : A. BERGER GMBH  
Manufacturer : A. BERGER GMBH  
Material and Mark : 100% Polyester with PA & FR coating,


Above information and sample(s) was/were submitted and confirmed by the client. SGS, however, assumes no responsibility to verify the accuracy, adequacy and completeness of the sample information provided by client.

\*\*\*\*\*

SGS Ref. No. : SDFS1909006299FF  
Date of Receipt : Sep.27, 2019  
Testing Start Date : Sep.27, 2019  
Testing End Date : Oct.14, 2019  
Test result(s) : For further details, please refer to the following page(s)  
(Unless otherwise stated the results shown in this test report refer only to the sample(s) tested)

\*\*\*\*\* To be continued\*\*\*\*\*

Signed for  
SGS-CSTC Standards Technical  
Services Co. , Ltd Xiamen Branch  
Testing Center

  
Civi Huang  
Authorized signatory



SGS-CSTC Standards Technical Services Co., Ltd.  
Xiamen Branch Testing Center Commercial Construction Material Laboratory

Unless otherwise agreed in writing, this document is issued by the Company subject to its General Conditions of Service printed overleaf, available on request or accessible at <http://www.sgs.com/en/Terms-and-Conditions.aspx> and, for electronic format documents, subject to Terms and Conditions for Electronic Documents at <http://www.sgs.com/en/Terms-and-Conditions/Terms-e-Document.aspx>. Attention is drawn to the limitation of liability, indemnification and jurisdiction issues defined therein. Any holder of this document is advised that information contained hereon reflects the Company's findings at the time of its intervention only and within the limits of Client's instructions, if any. The Company's sole responsibility is to its Client and this document does not exonerate parties to a transaction from exercising all their rights and obligations under the transaction documents. This document cannot be reproduced except in full, without prior written approval of the Company. Any unauthorized alteration, forgery or falsification of the content or appearance of this document is unlawful and offenders may be prosecuted to the fullest extent of the law. Unless otherwise stated the results shown in this test report refer only to the sample(s) tested and such sample(s) are retained for 30 days only.

Attention: To check the authenticity of testing / inspection report & certificate, please contact us at telephone: (86-755) 8307 1443, or email: CN.Doccheck@sgs.com

No.31 Xianghong Road, Xiang'An Torch Industrial Zone, Xiamen, Fujian Province, China. 361101 t (86-592) 5765857 f (86-592) 5765380 www.sgsgroup.com.cn  
中国·福建·厦门·火炬(翔安)产业区翔虹路31号 邮编:361101 t (86-592) 5765857 f (86-592) 5765380 e sgs.china@sgs.com

# TEST REPORT

No. : XMIN190902341CCM

Date : Oct.14, 2019

Page: 2 of 10

## Test Result Summary

No.	Test(s) Requested	Result(s)
1	DIN 4102-1:1998-05	The sample tested meets the requirements of class B1 of DIN 4102-1:1998-05 Clause 6.
2	EN 13501-1:2018 Fire classification of construction products and building elements-Part 1: Classification using data from reaction to fire tests	Classification: B-s1, d0

For further details, please refer to the following page(s)

\*\*\*\*\* To be continued\*\*\*\*\*



SGS-CSTC Xi'an Branch Inspection & Testing Services Co., Ltd.  
Xi'an Branch Testing Center Commercial Construction Material Laboratory

Unless otherwise agreed in writing, this document is issued by the Company subject to its General Conditions of Service printed overleaf, available on request or accessible at <http://www.sgs.com/en/Terms-and-Conditions.aspx> and, for electronic format documents, subject to Terms and Conditions for Electronic Documents at <http://www.sgs.com/en/Terms-and-Conditions/Terms-e-Documents.aspx>. Attention is drawn to the limitation of liability, indemnification and jurisdiction issues defined therein. Any holder of this document is advised that information contained hereon reflects the Company's findings at the time of its intervention only and within the limits of Client's instructions, if any. The Company's sole responsibility is to its Client and this document does not exonerate parties to a transaction from exercising all their rights and obligations under the transaction documents. This document cannot be reproduced except in full, without prior written approval of the Company. Any unauthorized alteration, forgery or falsification of the content or appearance of this document is unlawful and offenders may be prosecuted to the fullest extent of the law. Unless otherwise stated the results shown in this test report refer only to the sample(s) tested and such sample(s) are retained for 30 days only.

Attention: To check the authenticity of testing / inspection report & certificate, please contact us at telephone: (86-755) 8307 1443, or email: CN.Doccheck@sgs.com

No.31 Xianghong Road, Xiang'an Torch Industrial Zone, Xiamen, Fujian Province, China. 361101 t (86-592) 5765857 f (86-592) 5765380 www.sgs.com.cn  
中国·福建·厦门·火炬(翔安)产业区翔虹路31号 邮编:361101 t (86-592) 5765857 f (86-592) 5765380 e sgs.china@sgs.com

# TEST REPORT

No. : XMIN190902341CCM

Date : Oct.14, 2019

Page: 3 of 10

Test 1

## TESTS AND RESULTS

**Test Conducted:**

These tests are conducted in DIN 4102-1:1998-05 Clause 6 Class B building materials according to the application.

**Conditioning:**

Temperature: (23±2)°C; Relative Humidity: (50±6)%; Duration:96 h;

**Test Requirement:**

- All materials, except flooring, may be classed as B1 materials if they
  - withstand the test specified in DIN 4102-16 using the 'Brandschacht' apparatus specified in DIN 4102-15, and
  - meet the requirements for class B2 materials.

The test using the 'Brandschacht' apparatus described in DIN 4102-15 (cf. subclause 6.1.3.1) shall be deemed passed if

- the mean value for the residual length (portion of specimen that has not burned or charred; cf. subclause 9.1 of DIN 4102-16) of each specimen is at least 15 cm and no individual values are lower than 0 cm,
- the mean effluent temperature does not exceed 200 °C in any test,
- the requirement for the residual length of each specimen is met even where there is afterflame, afterglow, or smouldering.

**Test Results:**

1.DIN 4102-1 B2 Test Result

Parameter	Results									
	Bottom edge ignition					Surface ignition				
	#1	#2	#3	#4	#5	#6	#7	#8	#9	#10
Specimen ignition (Yes/No)	Yes*	Yes*	Yes*	Yes*	Yes*	Yes*	Yes*	Yes*	Yes*	Yes*
Ignition ceased time(s)	-	-	-	-	-	-	-	-	-	-
If flame tip reached 150mm line/40,190mm line(Yes/No)	No	No	No	No	No	No	No	No	No	No
Ignition time to reached 150mm line/40,190mm line(s)	-	-	-	-	-	-	-	-	-	-
Filter paper ignition (Yes/No)	No	No	No	No	No	No	No	No	No	No
Smoke developments	Slight smoke					Slight smoke				

Remark: \*--The specimen was ignited but self-extinguished after removed the burner. \*\*\*\*

\*\*\*\* To be continued\*\*\*\*\*



Unless otherwise agreed in writing, this document is issued by the Company subject to its General Conditions of Service printed overleaf, available on request or accessible at <http://www.sgs.com/en/Terms-and-Conditions.aspx> and, for electronic format documents, subject to Terms and Conditions for Electronic Documents at <http://www.sgs.com/en/Terms-and-Conditions/Terms-e-Documents.aspx>. Attention is drawn to the limitation of liability, indemnification and jurisdiction issues defined therein. Any holder of this document is advised that information contained hereon reflects the Company's findings at the time of its intervention only and within the limits of Client's instructions, if any. The Company's sole responsibility is to its Client and this document does not exonerate parties to a transaction from exercising all their rights and obligations under the transaction documents. This document cannot be reproduced except in full, without prior written approval of the Company. Any unauthorized alteration, forgery or falsification of the content or appearance of this document is unlawful and offenders may be prosecuted to the fullest extent of the law. Unless otherwise stated the results shown in this test report refer only to the sample(s) tested and such sample(s) are retained for 30 days only.

Attention: To check the authenticity of testing / inspection report & certificate, please contact us at telephone: (86-755) 8307 1443, or email: CN.Doccheck@sgs.com

SGS-CSTC Inspection & Testing Services Co., Ltd.  
Xiamen Branch Testing Center Commercial Construction Material Laboratory

No.31 Xianghong Road, Xiang'An Torch Industrial Zone, Xiamen, Fujian Province, China. 361101 t (86-592) 5765857 f (86-592) 5765380 www.sgs.com.cn  
中国·福建·厦门·火炬(翔安)产业区翔虹路31号 邮编:361101 t (86-592) 5765857 f (86-592) 5765380 e sgs.china@sgs.com

# TEST REPORT

No. : XMIN190902341CCM

Date : Oct.14, 2019

Page: 4 of 10

**Class B2 Test requirement:**

This test shall be deemed passed if, for any of the five specimens tested, flaming does not reach the gauge mark within 20 seconds after flame application, either with bottom edge ignition or surface ignition.

**Sub-conclusion:** Pass

2.Additional DIN4102-16 Test Result

Group 1:

Parameter	Results				
	#1	#2	#3	#4	Average value
Remaining length (cm)	56	59	60	57	58
Max. flue gas temperature (°C)	87				
After flame / after glow (s)	0				
Other observation	Melting				

Remark: According to DIN 4102-16 Clause 5.2, if the residual length measured after the first test is 45cm or greater, further tests are not required.

**Sub-conclusion:** Pass

**Conclusions:**

The sample tested meets the requirements of class B1 of DIN 4102-1:1998-05 Clause 6.

\*\*\*\*\* To be continued\*\*\*\*\*



SGS-CSTC 厦门分公司  
Xiamen Branch Testing Center  
Commercial Construction Material Laboratory

Unless otherwise agreed in writing, this document is issued by the Company subject to its General Conditions of Service printed overleaf, available on request or accessible at <http://www.sgs.com/en/Terms-and-Conditions.aspx> and, for electronic format documents, subject to Terms and Conditions for Electronic Documents at <http://www.sgs.com/en/Terms-and-Conditions/Terms-e-Documents.aspx>. Attention is drawn to the limitation of liability, indemnification and jurisdiction issues defined therein. Any holder of this document is advised that information contained hereon reflects the Company's findings at the time of its intervention only and within the limits of Client's instructions, if any. The Company's sole responsibility is to its Client and this document does not exonerate parties to a transaction from exercising all their rights and obligations under the transaction documents. This document cannot be reproduced except in full, without prior written approval of the Company. Any unauthorized alteration, forgery or falsification of the content or appearance of this document is unlawful and offenders may be prosecuted to the fullest extent of the law. Unless otherwise stated the results shown in this test report refer only to the sample(s) tested and such sample(s) are retained for 30 days only.

Attention: To check the authenticity of testing / inspection report & certificate, please contact us at telephone: (86-755) 8307 1443, or email: CN.Doccheck@sgs.com

No.31 Xianghong Road, Xiang'an Torch Industrial Zone, Xiamen, Fujian Province, China. 361101 t (86-592) 5765857 f (86-592) 5765380 www.sgs.com.cn  
中国·福建·厦门·火炬(翔安)产业区翔虹路31号 邮编:361101 t (86-592) 5765857 f (86-592) 5765380 e sgs.china@sgs.com

## TEST REPORT

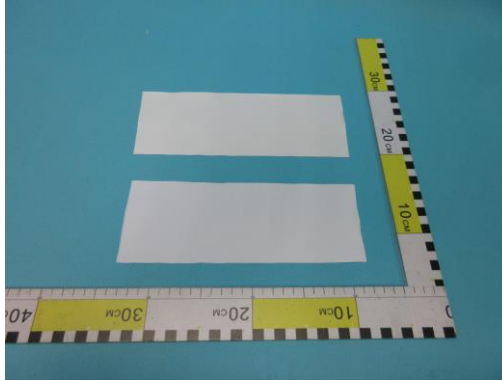
No. : XMIN190902341CCM

Date : Oct.14, 2019

Page: 5 of 10

### SAMPLE INFORMATION AND PICTURES

Area Density: About 202g/m<sup>2</sup>



\*\*\*\*\* To be continued\*\*\*\*\*



SGS-CSTC 标能技术服务有限公司 厦门分公司  
Xiamen Branch Testing Center Commercial Construction Material Laboratory

Unless otherwise agreed in writing, this document is issued by the Company subject to its General Conditions of Service printed overleaf, available on request or accessible at <http://www.sgs.com/en/Terms-and-Conditions.aspx> and, for electronic format documents, subject to Terms and Conditions for Electronic Documents at <http://www.sgs.com/en/Terms-and-Conditions/Terms-e-Document.aspx>. Attention is drawn to the limitation of liability, indemnification and jurisdiction issues defined therein. Any holder of this document is advised that information contained hereon reflects the Company's findings at the time of its intervention only and within the limits of Client's instructions, if any. The Company's sole responsibility is to its Client and this document does not exonerate parties to a transaction from exercising all their rights and obligations under the transaction documents. This document cannot be reproduced except in full, without prior written approval of the Company. Any unauthorized alteration, forgery or falsification of the content or appearance of this document is unlawful and offenders may be prosecuted to the fullest extent of the law. Unless otherwise stated the results shown in this test report refer only to the sample(s) tested and such sample(s) are retained for 30 days only.

Attention: To check the authenticity of testing / inspection report & certificate, please contact us at telephone: (86-755) 8307 1443, or email: [CN.Doccheck@sgs.com](mailto:CN.Doccheck@sgs.com)

No.31 Xianghong Road, Xiang'An Torch Industrial Zone, Xiamen, Fujian Province, China. 361101 t (86-592) 5765857 f (86-592) 5765380 www.sgs.com.cn  
中国·福建·厦门·火炬(翔安)产业区翔虹路31号 邮编:361101 t (86-592) 5765857 f (86-592) 5765380 e [sgs.china@sgs.com](mailto:sgs.china@sgs.com)



# TEST REPORT

No. : XMIN190902341CCM

Date : Oct.14, 2019

Page: 6 of 10

## Test 2

### TESTS AND RESULTS

#### Test Conducted:

This test is conducted as per EN 13501-1:2018 Fire classification of construction products and building elements-Part 1: Classification using data from reaction to fire tests. And the test methods as following:

- EN 13823:2010+A1:2014 Reaction to fire tests for building products-Building products excluding floorings exposed to the thermal attack by a single burning item.
- EN ISO 11925-2:2010+AC:2011 Reaction to fire tests-Ignitability of building products subjected to direct impingement of flame-Part 2: Single-flame source test.

#### Mounting and fixing (For EN 13823:2010+A1:2014):

Test sample is installed on the substrate by glue (test substrates for calcium silicate board, the density of 900 kg/m<sup>3</sup> Use glue brand: RUBSTIK; Applying the amount: About 200g/m<sup>2</sup>).

#### Test Results:

Test method	Parameter	Number of tests	Results
EN 13823:2010+A1:2014	FIGRA <sub>0.2MJ</sub> (W/s)	3	19.1
	FIGRA <sub>0.4MJ</sub> (W/s)		19.1
	THR <sub>600s</sub> (MJ)		1.3
	SMOGRA (m <sup>2</sup> /s <sup>2</sup> )		1.2
	TSP <sub>600s</sub> (m <sup>2</sup> )		10.3
	LFS < edge of specimen		Yes
EN ISO 11925-2:2010+AC:2011 Exposure = 30 s	Flaming particles or droplets	12	No
	Fs ≤ 150 mm		Yes
	Ignition of the filter paper		No

#### Remark:

FIGRA-Fire growth rate index used for classification purposes [W/s]

For the classes A2 and B, FIGRA<sub>0.2MJ</sub>

For the classes C and D, FIGRA<sub>0.4MJ</sub>

LFS-Lateral flame spread [m]

THR<sub>600s</sub>-Total heat release within 600 s [MJ]

SMOGRA-Smoke growth rate [m<sup>2</sup>/s<sup>2</sup>]

TSP<sub>600s</sub>-Total smoke production within 600 s [m<sup>2</sup>]

\*\*\*\*\* To be continued\*\*\*\*\*



SGS-CSTC Xi'an Branch Inspection & Testing Services Co., Ltd.  
Xi'an Branch Testing Center Commercial Construction Material Laboratory

Unless otherwise agreed in writing, this document is issued by the Company subject to its General Conditions of Service printed overleaf, available on request or accessible at <http://www.sgs.com/en/Terms-and-Conditions.aspx> and, for electronic format documents, subject to Terms and Conditions for Electronic Documents at <http://www.sgs.com/en/Terms-and-Conditions/Terms-e-Document.aspx>. Attention is drawn to the limitation of liability, indemnification and jurisdiction issues defined therein. Any holder of this document is advised that information contained hereon reflects the Company's findings at the time of its intervention only and within the limits of Client's instructions, if any. The Company's sole responsibility is to its Client and this document does not exonerate parties to a transaction from exercising all their rights and obligations under the transaction documents. This document cannot be reproduced except in full, without prior written approval of the Company. Any unauthorized alteration, forgery or falsification of the content or appearance of this document is unlawful and offenders may be prosecuted to the fullest extent of the law. Unless otherwise stated the results shown in this test report refer only to the sample(s) tested and such sample(s) are retained for 30 days only.

Attention: To check the authenticity of testing / inspection report & certificate, please contact us at telephone: (86-755) 8307 1443, or email: CN.Doccheck@sgs.com

No.31 Xianghong Road, Xiang'an Torch Industrial Zone, Xiamen, Fujian Province, China. 361101 t (86-592) 5765857 f (86-592) 5765380 www.sgs.com.cn  
中国·福建·厦门·火炬(翔安)产业区翔虹路31号 邮编:361101 t (86-592) 5765857 f (86-592) 5765380 e sgs.china@sgs.com

# TEST REPORT

No. : XMIN190902341CCM

Date : Oct.14, 2019

Page: 7 of 10

**Classification and direct field of application:**

This classification has been carried out in accordance with **EN 13501-1:2018**.

**Classification:**

Fire behaviour		Smoke production			Flaming droplets	
B	—	s	1	,	d	0

**Remark:**

The classes with their corresponding fire performance are given in Table 1.

Reaction to fire classification is based on the 7-step scale of A1 to F, where A1 is good and F is bad

**Statement:**

The test results relate to the behaviour of the test specimens of a product under the particular conditions of the test; they are not intended to be the sole criterion for assessing the potential fire hazard of the product in use.

**Warning:**

This classification report does not represent type approval or certification of the product.

The test laboratory has, therefore, play no part in sampling the product for the test, although it holds appropriate references to the manufacturer's factory production control that is aimed to be relevant to the samples tested and that will provide for their traceability.

\*\*\*\*\* To be continued\*\*\*\*\*



SGS-CSTC Xi'an Branch Inspection & Testing Services Co., Ltd.  
Xi'an Branch Testing Center Commercial Construction Material Laboratory

Unless otherwise agreed in writing, this document is issued by the Company subject to its General Conditions of Service printed overleaf, available on request or accessible at <http://www.sgs.com/en/Terms-and-Conditions.aspx> and, for electronic format documents, subject to Terms and Conditions for Electronic Documents at <http://www.sgs.com/en/Terms-and-Conditions/Terms-e-Document.aspx>. Attention is drawn to the limitation of liability, indemnification and jurisdiction issues defined therein. Any holder of this document is advised that information contained hereon reflects the Company's findings at the time of its intervention only and within the limits of Client's instructions, if any. The Company's sole responsibility is to its Client and this document does not exonerate parties to a transaction from exercising all their rights and obligations under the transaction documents. This document cannot be reproduced except in full, without prior written approval of the Company. Any unauthorized alteration, forgery or falsification of the content or appearance of this document is unlawful and offenders may be prosecuted to the fullest extent of the law. Unless otherwise stated the results shown in this test report refer only to the sample(s) tested and such sample(s) are retained for 30 days only.

Attention: To check the authenticity of testing / inspection report & certificate, please contact us at telephone: (86-755) 8307 1443, or email: CN.Doccheck@sgs.com

No.31 Xianghong Road, Xiang'an Torch Industrial Zone, Xiamen, Fujian Province, China. 361101 t (86-592) 5765857 f (86-592) 5765380 www.sgs.com.cn  
中国·福建·厦门·火炬(翔安)产业区翔虹路31号 邮编:361101 t (86-592) 5765857 f (86-592) 5765380 e sgs.china@sgs.com

# TEST REPORT

No. : XMIN190902341CCM

Date : Oct.14, 2019

Page: 8 of 10

Table 1 — Classes of reaction to fire performance for construction products excluding floorings and linear pipe thermal insulation products.

Class	Test method(s)	Classification criteria	Additional classification
A1	EN ISO 1182 <sup>a</sup> and	$\Delta T \leq 30^\circ\text{C}$ , and $\Delta m \leq 50\%$ , and $t_f = 0$ (i.e. no sustained flaming)	-
	EN ISO 1716	$PCS \leq 2.0\text{MJ/kg}^a$ and $PCS \leq 2.0\text{MJ/kg}^{bc}$ and $PCS \leq 1.4\text{MJ/m}^2^d$ and $PCS \leq 2.0\text{MJ/kg}^e$	-
A2	EN ISO 1182 <sup>a</sup> or	and $\Delta T \leq 50^\circ\text{C}$ , and $\Delta m \leq 50\%$ , and $t_f \leq 20\text{ s}$	-
	EN ISO 1716		-
	EN 13823	$FIGRA \leq 120\text{W/s}$ and $LFS < \text{edge of specimen}$ and $THR_{600s} \leq 7.5\text{MJ}$	Smoke production <sup>f</sup> and Flaming droplets/particles <sup>g</sup>
B	EN 13823 and	$FIGRA \leq 120\text{W/s}$ and $LFS < \text{edge of specimen}$ and $THR_{600s} \leq 7.5\text{MJ}$	Smoke production <sup>f</sup> and Flaming droplets/particles <sup>g</sup>
	EN ISO 11925-2 <sup>i</sup> Exposure = 30s	$F_s \leq 150\text{mm}$ within 60 s	
C	EN 13823 and	$FIGRA \leq 250\text{W/s}$ and $LFS < \text{edge of specimen}$ and $THR_{600s} \leq 15\text{MJ}$	Smoke production <sup>f</sup> and Flaming droplets/particles <sup>g</sup>
	EN ISO 11925-2 <sup>i</sup> Exposure = 30s	$F_s \leq 150\text{mm}$ within 60 s	
D	EN 13823 and	$FIGRA \leq 750\text{W/s}$	Smoke production <sup>f</sup> and Flaming droplets/particles <sup>g</sup>
	EN ISO 11925-2 <sup>i</sup> Exposure = 30s	$F_s \leq 150\text{mm}$ within 60 s	
E	EN ISO 11925-2 <sup>i</sup> Exposure = 15s	$F_s \leq 150\text{mm}$ within 20 s	flaming droplets/particles <sup>h</sup>
F	EN ISO 11925-2 <sup>i</sup> Exposure = 15s	$F_s > 150\text{mm}$ within 20 s	-

\*\*\*\*\* To be continued \*\*\*\*\*



SGS-CSTC Inspection & Testing Services Co., Ltd.  
Xiamen Branch Testing Center Construction Material Laboratory

Unless otherwise agreed in writing, this document is issued by the Company subject to its General Conditions of Service printed overleaf, available on request or accessible at <http://www.sgs.com/en/Terms-and-Conditions.aspx> and, for electronic format documents, subject to Terms and Conditions for Electronic Documents at <http://www.sgs.com/en/Terms-and-Conditions/Terms-e-Documents.aspx>. Attention is drawn to the limitation of liability, indemnification and jurisdiction issues defined therein. Any holder of this document is advised that information contained hereon reflects the Company's findings at the time of its intervention only and within the limits of Client's instructions, if any. The Company's sole responsibility is to its Client and this document does not exonerate parties to a transaction from exercising all their rights and obligations under the transaction documents. This document cannot be reproduced except in full, without prior written approval of the Company. Any unauthorized alteration, forgery or falsification of the content or appearance of this document is unlawful and offenders may be prosecuted to the fullest extent of the law. Unless otherwise stated the results shown in this test report refer only to the sample(s) tested and such sample(s) are retained for 30 days only.

Attention: To check the authenticity of testing / inspection report & certificate, please contact us at telephone: (86-755) 8307 1443, or email: CN.Doccheck@sgs.com

No.31 Xianghong Road, Xiang'an Torch Industrial Zone, Xiamen, Fujian Province, China. 361101 t (86-592) 5765857 f (86-592) 5765380 www.sgs.com.cn  
中国·福建·厦门·火炬(翔安)产业区翔虹路31号 邮编:361101 t (86-592) 5765857 f (86-592) 5765380 e sgs.china@sgs.com



## TEST REPORT

No. : XMIN190902341CCM

Date : Oct.14, 2019

Page: 9 of 10

- <sup>a</sup> For homogeneous products and substantial components of non-homogeneous products.
- <sup>b</sup> For any external non-substantial component of non-homogeneous products.
- <sup>c</sup> Alternatively, any external non-substantial component having a PCS  $\leq 2,0 \text{ MJ/m}^2$ , provided that the product satisfies the following criteria of EN 13823: FIGRA  $\leq 20 \text{ W/s}$ , and LFS < edge of specimen, and THR<sub>600s</sub>  $\leq 4,0 \text{ MJ}$ , and s1, and d0.
- <sup>d</sup> For any internal non-substantial component of non-homogeneous products.
- <sup>e</sup> For the product as a whole.
- <sup>f</sup> In the last phase of the development of the test procedure, modifications of the smoke measurement system have been introduced, the effect of which needs further investigation. This may result in a modification of the limit values and/or parameters for the evaluation of the smoke production.
- s1 = SMOGRA  $\leq 30 \text{ m}^2/\text{s}^2$  and TSP<sub>600s</sub>  $\leq 50 \text{ m}^2$ ; s2 = SMOGRA  $\leq 180 \text{ m}^2/\text{s}^2$  and TSP<sub>600s</sub>  $\leq 200 \text{ m}^2$ ; s3 = not s1 or s2
- <sup>g</sup> d0 = No flaming droplets/ particles in EN 13823 within 600 s;  
d1 = no flaming droplets/ particles persisting longer than 10 s in EN 13823 within 600 s;  
d2 = not d0 or d1.  
Ignition of the paper in EN ISO 11925-2 results in a d2 classification.
- <sup>h</sup> Pass = no ignition of the paper (no classification);  
Fail = ignition of the paper (d2 classification).
- <sup>i</sup> Under conditions of surface flame attack and, if appropriate to the end-use application of the product, edge flame attack.

\*\*\*\*\* To be continued\*\*\*\*\*



SGS-CSTC Xi'an Branch Inspection & Testing Services Co., Ltd.  
Xi'an Branch Testing Center Commercial Construction Material Laboratory

Unless otherwise agreed in writing, this document is issued by the Company subject to its General Conditions of Service printed overleaf, available on request or accessible at <http://www.sgs.com/en/Terms-and-Conditions.aspx> and, for electronic format documents, subject to Terms and Conditions for Electronic Documents at <http://www.sgs.com/en/Terms-and-Conditions/Terms-e-Document.aspx>. Attention is drawn to the limitation of liability, indemnification and jurisdiction issues defined therein. Any holder of this document is advised that information contained hereon reflects the Company's findings at the time of its intervention only and within the limits of Client's instructions, if any. The Company's sole responsibility is to its Client and this document does not exonerate parties to a transaction from exercising all their rights and obligations under the transaction documents. This document cannot be reproduced except in full, without prior written approval of the Company. Any unauthorized alteration, forgery or falsification of the content or appearance of this document is unlawful and offenders may be prosecuted to the fullest extent of the law. Unless otherwise stated the results shown in this test report refer only to the sample(s) tested and such sample(s) are retained for 30 days only.

Attention: To check the authenticity of testing / inspection report & certificate, please contact us at telephone: (86-755) 8307 1443, or email: CN.Doccheck@sgs.com

No.31 Xianghong Road, Xiang'an Torch Industrial Zone, Xiamen, Fujian Province, China. 361101 t (86-592) 5765857 f (86-592) 5765380 www.sgs.com.cn  
中国·福建·厦门·火炬(翔安)产业区翔虹路31号 邮编:361101 t (86-592) 5765857 f (86-592) 5765380 e sgs.china@sgs.com

## TEST REPORT

No. : XMIN190902341CCM

Date : Oct.14, 2019

Page: 10 of 10

### SAMPLE INFORMATION AND PICTURES

Mass per unit area: About 202g/m<sup>2</sup>



Before Test (EN 13823)



After Test (EN 13823)

SGS authenticate the photos on original report only

Note: The above test was carried out by SGS-CSTC Standards Technical Services Co., Ltd. Shunde Branch.

\*\*\*\*\* End of report\*\*\*\*\*



SGS-CSTC Standards Technical Services Co., Ltd.  
Xiamen Branch Testing Center Commercial Construction Material Laboratory

Unless otherwise agreed in writing, this document is issued by the Company subject to its General Conditions of Service printed overleaf, available on request or accessible at <http://www.sgs.com/en/Terms-and-Conditions.aspx> and, for electronic format documents, subject to Terms and Conditions for Electronic Documents at <http://www.sgs.com/en/Terms-and-Conditions/Terms-e-Document.aspx>. Attention is drawn to the limitation of liability, indemnification and jurisdiction issues defined therein. Any holder of this document is advised that information contained hereon reflects the Company's findings at the time of its intervention only and within the limits of Client's instructions, if any. The Company's sole responsibility is to its Client and this document does not exonerate parties to a transaction from exercising all their rights and obligations under the transaction documents. This document cannot be reproduced except in full, without prior written approval of the Company. Any unauthorized alteration, forgery or falsification of the content or appearance of this document is unlawful and offenders may be prosecuted to the fullest extent of the law. Unless otherwise stated the results shown in this test report refer only to the sample(s) tested and such sample(s) are retained for 30 days only.

Attention: To check the authenticity of testing / inspection report & certificate, please contact us at telephone: (86-755) 8307 1443, or email: [CN.Doccheck@sgs.com](mailto:CN.Doccheck@sgs.com)

No.31 Xianghong Road, Xiang'an Torch Industrial Zone, Xiamen, Fujian Province, China. 361101 t (86-592) 5765857 f (86-592) 5765380 www.sgs.com.cn  
中国·福建·厦门·火炬(翔安)产业区翔虹路31号 邮编:361101 t (86-592) 5765857 f (86-592) 5765380 e [sgs.china@sgs.com](mailto:sgs.china@sgs.com)